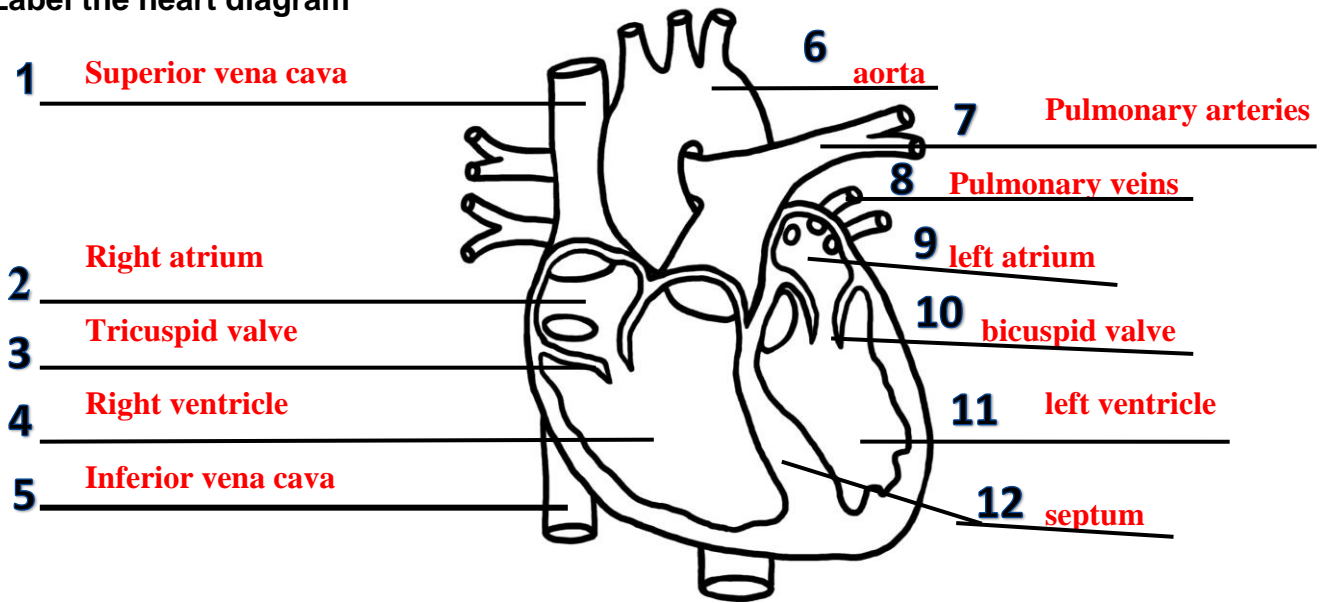


Name: _____
Science _____

Date: _____
Circulatory System Review

Label the heart diagram



13. What is the main job of the circulatory system? **The main job of the circulatory system is to transport nutrients & oxygen to the cells; carry wastes & carbon dioxide away. Other functions are to fight infections & transport chemical messengers to target organs.**

14. Why does the blood need to travel to the lungs before traveling to the body? **The blood needs to travel to the lungs in order to diffuse carbon dioxide out and pick up the oxygen that is needed by the cells.**

15. What structures of the heart makes sure that deoxygenated blood never mixes with oxygenated blood? **The structures that keep the oxygenated blood from mixing from the deoxygenated blood are the valves and septum.**

16. Which type of blood vessel . . . **a. artery** **b. vein** **c. capillary**

a. help the blood pump? **a**

e. have the thickest walls? **a**

b. contain valves? **b**

f. allow for the diffusion of O₂ & CO₂? **c**

c. travel away from heart? **a**

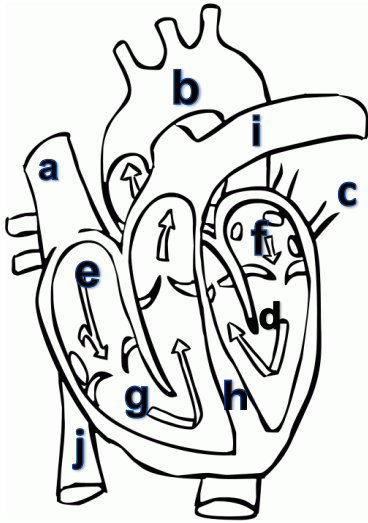
g. travel towards heart? **b**

d. connect arteries to veins? **c**

h. has walls only 1 cell thick? **c**

17. List the 4 components of blood. **Plasma, RBC, WBC, Platelets**

Use the following diagram to answer the following questions.



Which part(s) of the circulatory system . . . ?

- 18. contain oxygenated blood **f & d**
- 19. are chambers on the left side **f & d**
- 20. are chambers on the right side **e & g**
- 21. is the strongest **d**
- 22. pumps blood to the lungs **g**
- 23. **pumps** blood to body **d**
- 24. carries blood to body **b**
- 25. carries blood to lungs **i**
- 28. largest artery **b**
- 26. brings blood to the heart from body **a & j**
- 29. largest vein **a & j**
- 27. brings blood to the heart from lungs **c**

31. Which part of blood . . . ?

- a. contains mostly water **plasma**
- b. fights infections **WBC**
- c. helps stop bleeding **platelets**
- d. is straw colored **plasma**

RBC

WBC

Platelets

Plasma

e. contains hemoglobin **RBC**

f. determines blood type **RBC**

g. carries dissolved nutrients **plasma**

h. carries oxygen to cells **RBC**

32. How does the digestive and circulatory system work together? **The digestive system works with the circulatory system. Digestive system digests nutrients in the small intestine. The circulatory system absorbs the nutrients in the capillaries to transport food to cells.**

33. How does the circulatory system work with the respiratory system? **The circulatory system brings deoxygenated blood to drop off carbon dioxide in the lungs. Then, the respiratory system diffuses oxygen into the capillaries to bring back to the heart for transportation to cells.**

TERMS fibrin RBC atria ventricles aorta capillaries plasma hemoglobin platelets

RBC

34. Disc shaped cell that contains hemoglobin to help carry O₂ & CO₂

Aorta

35. Carries blood from heart to the rest of the body.

Fibrin

36. Chemical that weaves tiny fibers across cut.

Hemoglobin

37. Iron containing protein that attracts oxygen & carbon dioxide.

Ventricle

38. The pumping chambers of the heart.

Platelets

39. Fragments that help in clotting.

Capillaries

40. Absorption of materials occurs here.

Plasma

41. Carries digested nutrients.

Atrium

42. The collecting chambers of the heart.